

Rocglen Coal Mine- Monthly Monitoring Summary

Site Information

EPL No: 12870

EPA Website Link: <http://epa.nsw.gov.au/prpoeoapp/ViewPOEOLicence.aspx?DOCID=40278&SYSUID=1&LICID=12870>

Licensee: Whitehaven Coal Mining Pty Ltd

Licensee Address: Rocglen Coal Mine, Wean Road, GUNNEDAH NSW 2380

EPL Monitoring Points: See Figure 1 below

Sampling Period: January 2023

Obtained Date: 21st February 2023

Publication Date: 22nd February 2023

Table 1 - No Pollutant Limits Apply

EPL ID	Pollutant	Units of Measure	Monitoring Frequency	No. of Samples for the Month	Date(s) Sampled	Date(s) Obtained	Min Value	Mean Value	Median Value	Max or Only Value
4	Particulates-Deposited Matter (BD4)	g/m ² /month	Continuous	1	12/01/2023	30/01/2023	-	-	-	1.5
6	Particulates-Deposited Matter (BD6)	g/m ² /month	Continuous	1	12/01/2023	30/01/2023	-	-	-	1.38
10	PM ₁₀	µg/m ³	Every 6 days	5	5/01/2023 11/01/2023 17/01/2023 23/01/2023 29/01/2023	21/02/2023	3.1	7.7	8.6	12.1
11	Conductivity	µS /cm	Special Frequency 1*	0	-	-	-	-	-	-
	Total organic carbon	mg/L					-	-	-	-
12	Conductivity	µS /cm	Special Frequency 1*	0	-	-	-	-	-	-
	Total organic carbon	mg/L					-	-	-	-
13	TSS	mg/L	Special Frequency 2**(DDCK)	0	-	-	-	-	-	-
	Conductivity	µS/cm					-	-	-	-
	Oil & Grease	mg/L					-	-	-	-
	pH	pH					-	-	-	-



Rocglen Coal Mine- Monthly Monitoring Summary

EPL ID	Pollutant	Units of Measure	Monitoring Frequency	No. of Samples for the Month	Date(s) Sampled	Date(s) Obtained	Min Value	Mean Value	Median Value	Max or Only Value
	Total organic carbon	mg/L					-	-	-	-
14	TSS	mg/L	Special Frequency 2**(UNDC)	0	-	-	-	-	-	-
	Conductivity	µS/cm					-	-	-	-
	Oil & Grease	mg/L					-	-	-	-
	pH	pH					-	-	-	-
	Total organic carbon	mg/L					-	-	-	-
15	TSS	mg/L	Special Frequency 2** (SD7)	0	-	-	-	-	-	-
	Conductivity	µS /cm					-	-	-	-
	Oil & Grease	mg/L					-	-	-	-
	pH	pH					-	-	-	-
	Total organic carbon	mg/L					-	-	-	-

Table 2 - Pollutant Limits Apply

EPL ID	Pollutant	Units of Measure	Monitoring Frequency	No. of Samples for the Month	Date(s) Sampled	Date(s) Obtained	Min Value	Max or Only Value	100%ile Limit	Exceedance (Yes/No)	Comments
11	TSS	mg/L	Special Frequency 1*	0	-	-	-	-	-	No	-
	Oil & Grease	mg/L					-	-	-	No	
	pH	pH					-	-	-	No	
12	TSS	mg/L	Special Frequency 1*	0	-	-	-	-	-	No	-
	Oil & Grease	mg/L					-	-	-	No	
	pH	pH					-	-	-	No	

* Special Frequency 1 means the collection of samples as soon as practicable after each discharge commences and in any case not more than 12 hours after each discharge commences.

** Special Frequency 2 means collection of samples quarterly (in the event of flow during the quarter) at a time when there is flow and as soon as practicable after each wet weather discharge from points 11 and 12 commences and in any case not more than 12 hours after each discharge commences.

Rocglen Coal Mine- Monthly Monitoring Summary

Table 3 – Monitoring (Quarterly & Yearly – No Limits apply)

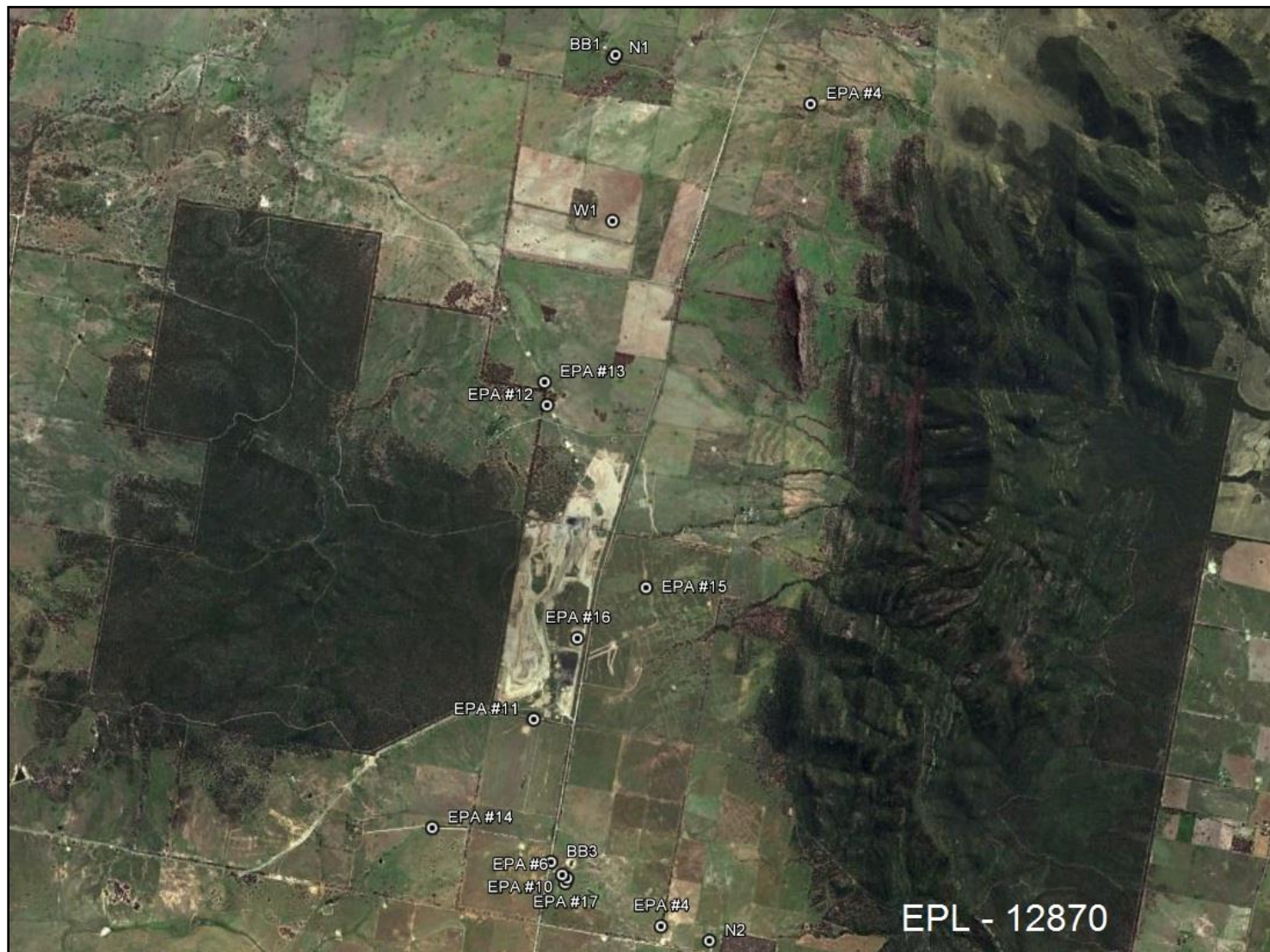
EPL ID	Pollutant	Units of Measure	Monitoring Frequency	No. of Samples for the Month	Date Sampled	Date Obtained	Min Value	Mean Value	Median Value	Max Value/Only Value
16	Aluminium	mg/L	Yearly	0	-	-	-	-	-	-
	Arsenic	mg/L					-	-	-	-
	Bicarbonate	mg/L					-	-	-	-
	Chloride	mg/L					-	-	-	-
	Iron	mg/L					-	-	-	-
	Manganese	mg/L					-	-	-	-
	Sodium	mg/L					-	-	-	-
16	Conductivity	µS/cm	Quarterly	0	-	-	-	-	-	-
	Oil & Grease	mg/L					-	-	-	-
	pH	pH					-	-	-	-
	TOC	mg/L					-	-	-	-
	TSS	mg/L					-	-	-	-



WHITEHAVEN COAL

Rocglen Coal Mine- Monthly Monitoring Summary

Figure 1 – EPL 12870 Monitoring Locations



Rocglen Coal Mine- Monthly Monitoring Summary

Site Information

EPL No: 12870

EPA Website Link: <http://epa.nsw.gov.au/prpoeoapp/ViewPOEOLicence.aspx?DOCID=40278&SYSUID=1&LICID=12870>

Licensee: Whitehaven Coal Mining Pty Ltd

Licensee Address: Rocglen Coal Mine, Wean Road, GUNNEDAH NSW 2380

EPL Monitoring Points: See Figure 1 below

Sampling Period: February 2023

Obtained Date: 16th March 2023

Publication Date: 17th March 2023

Table 1 - No Pollutant Limits Apply

EPL ID	Pollutant	Units of Measure	Monitoring Frequency	No. of Samples for the Month	Date(s) Sampled	Date(s) Obtained	Min Value	Mean Value	Median Value	Max or Only Value
4	Particulates-Deposited Matter (BD4)	g/m ² /month	Continuous	1	13/02/2023	09/03/2023	-	-	-	0.64
6	Particulates-Deposited Matter (BD6)	g/m ² /month	Continuous	1	13/02/2023	09/03/2023	-	-	-	1.23
10	PM ₁₀	µg/m ³	Every 6 days	5	04/02/2023 10/02/2023 16/02/2023 22/02/2023 28/02/2023	16/03/2023	9	75.34	13.9	321
11	Conductivity	µS /cm	Special Frequency 1*	1	03/02/23	13/02/23	-	-	-	185
	Total organic carbon	mg/L					-	-	-	36
12	Conductivity	µS /cm	Special Frequency 1*	0	-	-	-	-	-	-
	Total organic carbon	mg/L					-	-	-	-
13	TSS	mg/L	Special Frequency 2**(DDCK)	0	-	-	-	-	-	-
	Conductivity	µS/cm					-	-	-	-
	Oil & Grease	mg/L					-	-	-	-
	pH	pH					-	-	-	-



Rocglen Coal Mine- Monthly Monitoring Summary

EPL ID	Pollutant	Units of Measure	Monitoring Frequency	No. of Samples for the Month	Date(s) Sampled	Date(s) Obtained	Min Value	Mean Value	Median Value	Max or Only Value
	Total organic carbon	mg/L					-	-	-	-
14	TSS	mg/L	Special Frequency 2**(UNDC)	0	-	-	-	-	-	-
	Conductivity	µS/cm					-	-	-	-
	Oil & Grease	mg/L					-	-	-	-
	pH	pH					-	-	-	-
	Total organic carbon	mg/L					-	-	-	-
15	TSS	mg/L	Special Frequency 2** (SD7)	1	27/02/2023	08/03/2023	-	-	-	44
	Conductivity	µS /cm					-	-	-	262
	Oil & Grease	mg/L					-	-	-	2.5
	pH	pH					-	-	-	9
	Total organic carbon	mg/L					-	-	-	42

Table 2 - Pollutant Limits Apply

EPL ID	Pollutant	Units of Measure	Monitoring Frequency	No. of Samples for the Month	Date(s) Sampled	Date(s) Obtained	Min Value	Max or Only Value	100%ile Limit	Exceedance (Yes/No)	Comments
11	TSS	mg/L	Special Frequency 1*	1	03/02/23	13/02/23	-	599	-	No	-
	Oil & Grease	mg/L					-	<5	-	No	
	pH	pH					-	7.36	-	No	
12	TSS	mg/L	Special Frequency 1*	0	-	-	-	-	-	No	-
	Oil & Grease	mg/L					-	-	-	No	
	pH	pH					-	-	-	No	

* Special Frequency 1 means the collection of samples as soon as practicable after each discharge commences and in any case not more than 12 hours after each discharge commences.



Rocglen Coal Mine- Monthly Monitoring Summary

** Special Frequency 2 means collection of samples quarterly (in the event of flow during the quarter) at a time when there is flow and as soon as practicable after each wet weather discharge from points 11 and 12 commences and in any case not more than 12 hours after each discharge commences.

Table 3 – Monitoring (Quarterly & Yearly – No Limits apply)

EPL ID	Pollutant	Units of Measure	Monitoring Frequency	No. of Samples for the Month	Date Sampled	Date Obtained	Min Value	Mean Value	Median Value	Max Value/Only Value
16	Aluminium	mg/L	Yearly	0	-	-	-	-	-	-
	Arsenic	mg/L					-	-	-	-
	Bicarbonate	mg/L					-	-	-	-
	Chloride	mg/L					-	-	-	-
	Iron	mg/L					-	-	-	-
	Manganese	mg/L					-	-	-	-
	Sodium	mg/L					-	-	-	-
16	Conductivity	µS/cm	Quarterly	1	27/02/2023	8/03/2023	-	-	-	212
	Oil & Grease	mg/L					-	-	-	<5
	pH	pH					-	-	-	8.39
	TOC	mg/L					-	-	-	42
	TSS	mg/L					-	-	-	44



WHITEHAVEN COAL

Rocglen Coal Mine- Monthly Monitoring Summary

Figure 1 – EPL 12870 Monitoring Locations



Rocglen Coal Mine- Monthly Monitoring Summary

Site Information

EPL No: 12870

EPA Website Link: <http://epa.nsw.gov.au/prpoeoapp/ViewPOEOLicence.aspx?DOCID=40278&SYSUID=1&LICID=12870>

Licensee: Whitehaven Coal Mining Pty Ltd

Licensee Address: Rocglen Coal Mine, Wean Road, GUNNEDAH NSW 2380

EPL Monitoring Points: See Figure 1 below

Sampling Period: March 2023

Obtained Date: 16th April 2023

Publication Date: 20th April 2023

Table 1 - No Pollutant Limits Apply

EPL ID	Pollutant	Units of Measure	Monitoring Frequency	No. of Samples for the Month	Date(s) Sampled	Date(s) Obtained	Min Value	Mean Value	Median Value	Max or Only Value
4	Particulates-Deposited Matter (BD4)	g/m ² /month	Continuous	1	14/03/2023	04/04/2023	-	-	-	2.41
6	Particulates-Deposited Matter (BD6)	g/m ² /month	Continuous	1	14/03/2023	04/04/2023	-	-	-	0.9
10	PM ₁₀	µg/m ³	Every 6 days	5	06/03/2023 12/03/2023 18/03/2023 24/03/2023 30/03/2023	16/04/2023	5.4	14.7	9.15	35.1
11	Conductivity	µS /cm	Special Frequency 1*	2	13/03/2023 25/03/2023	3/04/2023	248	387	386.5	525
	Total organic carbon	mg/L					8	10	10	12
12	Conductivity	µS /cm	Special Frequency 1*	1	23/03/2023	3/04/2023	-	-	-	428
	Total organic carbon	mg/L					-	-	-	9
13	TSS	mg/L					-	-	-	16



Rocglen Coal Mine- Monthly Monitoring Summary

EPL ID	Pollutant	Units of Measure	Monitoring Frequency	No. of Samples for the Month	Date(s) Sampled	Date(s) Obtained	Min Value	Mean Value	Median Value	Max or Only Value
	Conductivity	µS/cm	Special Frequency 2**(DDCK)	1	14/03/2023	31/03/2023	-	-	-	112
	Oil & Grease	mg/L					-	-	-	<5
	pH	pH					-	-	-	6.71
	Total organic carbon	mg/L					-	-	-	24
14	TSS	mg/L	Special Frequency 2**(UNDC)	2	14/03/2023 27/03/2023	31/03/2023	96	663	663	1230
	Conductivity	µS/cm					259	374	374	489
	Oil & Grease	mg/L					<5	<5	<5	<5
	pH	pH					6.71	7.22	7.22	7.65
	Total organic carbon	mg/L					26	26	26	26
15	TSS	mg/L	Special Frequency 2** (SD7)	0	-	-	-	-	-	-
	Conductivity	µS /cm					-	-	-	-
	Oil & Grease	mg/L					-	-	-	-
	pH	pH					-	-	-	-
	Total organic carbon	mg/L					-	-	-	-

Table 2 - Pollutant Limits Apply

EPL ID	Pollutant	Units of Measure	Monitoring Frequency	No. of Samples for the Month	Date(s) Sampled	Date(s) Obtained	Min Value	Max or Only Value	100%ile Limit	Exceedance (Yes/No)	Comments
11	TSS	mg/L	Special Frequency 1*	2	13/03/2023 25/03/2023	3/04/2023	876	1620	50***	No	2 x WW Discharges
	Oil & Grease	mg/L					<5	<5	10	No	
	pH	pH					8.33	8.47	6.5-8.5	No	
12	TSS	mg/L	Special Frequency 1*	1	23/03/2023	3/04/2023	-	10	50***	No	Controlled release
	Oil & Grease	mg/L					-	<5	10	No	
	pH	pH					-	8.38	6.5-8.5	No	



Rocglan Coal Mine- Monthly Monitoring Summary

* Special Frequency 1 means the collection of samples as soon as practicable after each discharge commences and, in any case, not more than 12 hours after each discharge commences.

** Special Frequency 2 means collection of samples quarterly (in the event of flow during the quarter) at a time when there is flow and as soon as practicable after each wet weather discharge from points 11 and 12 commences and in any case not more than 12 hours after each discharge commences.

***The Total Suspended Solids concentration limits specified for Points 11 and 12 may be exceeded for water discharged provided that: (a) the discharge occurs solely as a result of rainfall measured at the premises that exceeds 38.4 millimetres over any consecutive 5 day period immediately prior to the discharge occurring; and (b) all practical measures have been implemented to dewater all sediment dams within 5 days of rainfall such that they have sufficient capacity to store run off from a 38.4 millimetre, 5 day rainfall event.

Table 3 – Monitoring (Quarterly & Yearly – No Limits apply)

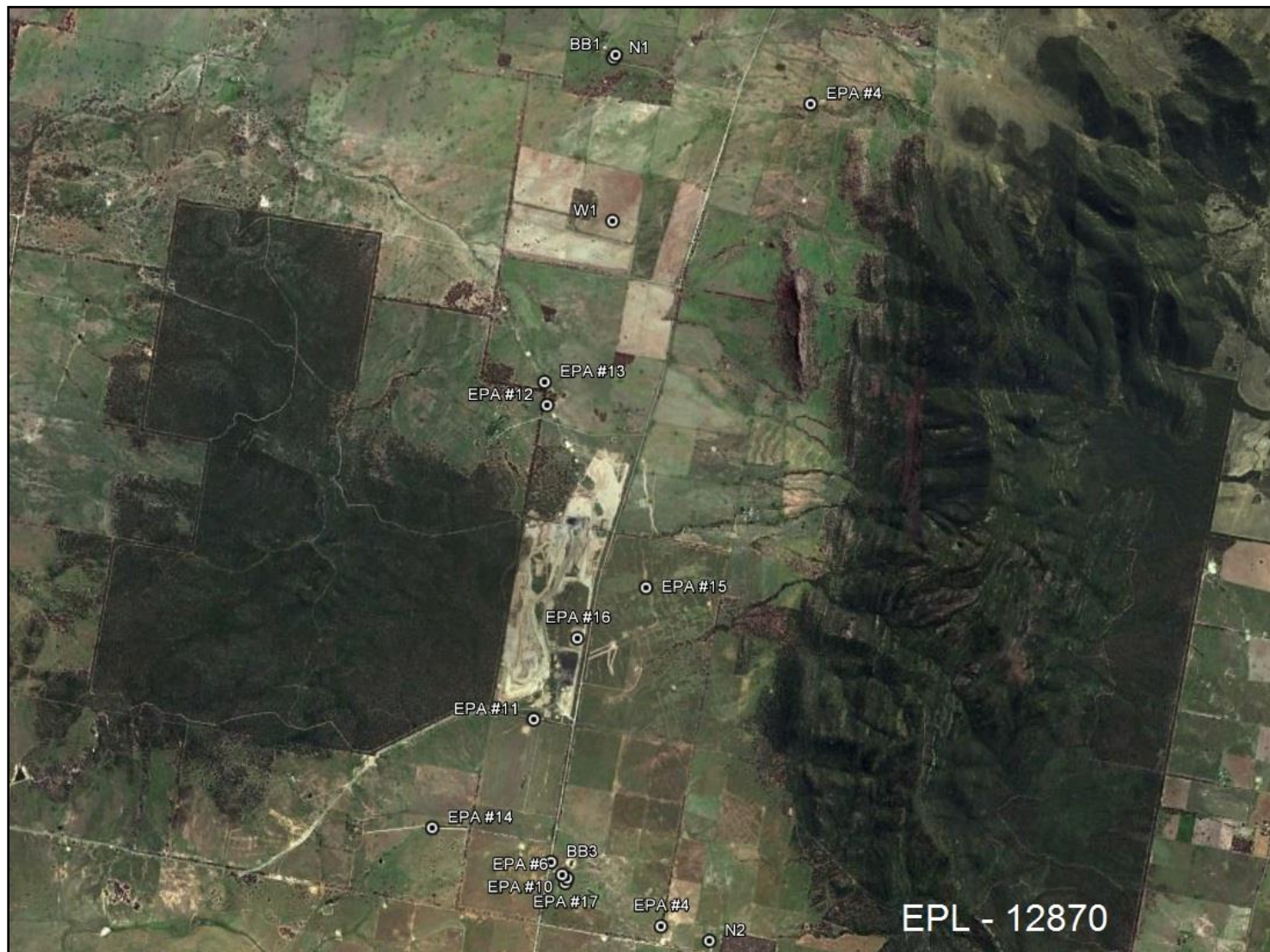
EPL ID	Pollutant	Units of Measure	Monitoring Frequency	No. of Samples for the Month	Date Sampled	Date Obtained	Min Value	Mean Value	Median Value	Max Value/Only Value
16	Aluminium	mg/L	Yearly	0	-	-	-	-	-	-
	Arsenic	mg/L					-	-	-	-
	Bicarbonate	mg/L					-	-	-	-
	Chloride	mg/L					-	-	-	-
	Iron	mg/L					-	-	-	-
	Manganese	mg/L					-	-	-	-
	Sodium	mg/L					-	-	-	-
16	Conductivity	µS/cm	Quarterly	0	-	-	-	-	-	-
	Oil & Grease	mg/L					-	-	-	-
	pH	pH					-	-	-	-
	TOC	mg/L					-	-	-	-
	TSS	mg/L					-	-	-	-



WHITEHAVEN COAL

Rocglen Coal Mine- Monthly Monitoring Summary

Figure 1 – EPL 12870 Monitoring Locations



Rocglen Coal Mine- Monthly Monitoring Summary

Site Information

EPL No: 12870

EPA Website Link: <http://epa.nsw.gov.au/prpoeoapp/ViewPOEOLicence.aspx?DOCID=40278&SYSUID=1&LICID=12870>

Licensee: Whitehaven Coal Mining Pty Ltd

Licensee Address: Rocglen Coal Mine, Wean Road, GUNNEDAH NSW 2380

EPL Monitoring Points: See Figure 1 below

Sampling Period: April 2023

Obtained Date: 23rd May 2023

Publication Date: 24th May 2023

Table 1 - No Pollutant Limits Apply

EPL ID	Pollutant	Units of Measure	Monitoring Frequency	No. of Samples for the Month	Date(s) Sampled	Date(s) Obtained	Min Value	Mean Value	Median Value	Max or Only Value
4	Particulates-Deposited Matter (BD4)	g/m ² /month	Continuous	1	13/04/2023	27/04/2023	-	-	-	0.3
6	Particulates-Deposited Matter (BD6)	g/m ² /month	Continuous	1	13/04/2023	27/04/2023	-	-	-	1.1
10	PM ₁₀	µg/m ³	Every 6 days	5	05/04/2023 11/04/2023 17/04/2023 23/04/2023 29/04/2023	(Last Sample Obtained) 23/05/2023	2.6	5.3	5.2	8.1
11	Conductivity	µS /cm	Special Frequency 1*	0	-	-	-	-	-	-
	Total organic carbon	mg/L					-	-	-	-
12	Conductivity	µS /cm	Special Frequency 1*	2	04/04/2023 18/04/2023	(Last Sample Obtained) 01/05/2023	218	358	357.5	497
	Total organic carbon	mg/L					9	10	9.5	10
13	TSS	mg/L	Special Frequency 2**(DDCK)	1	18/04/2023	01/05/2023	-	-	-	112
	Conductivity	µS/cm					-	-	-	339
	Oil & Grease	mg/L					-	-	-	<5
	pH	pH					-	-	-	7.26



Rocgen Coal Mine- Monthly Monitoring Summary

EPL ID	Pollutant	Units of Measure	Monitoring Frequency	No. of Samples for the Month	Date(s) Sampled	Date(s) Obtained	Min Value	Mean Value	Median Value	Max or Only Value
	Total organic carbon	mg/L					-	-	-	24
14	TSS	mg/L	Special Frequency 2**(UNDC)	0	-	-	-	-	-	-
	Conductivity	µS/cm					-	-	-	-
	Oil & Grease	mg/L					-	-	-	-
	pH	pH					-	-	-	-
	Total organic carbon	mg/L					-	-	-	-
15	TSS	mg/L	Special Frequency 2** (SD7)	0	-	-	-	-	-	-
	Conductivity	µS /cm					-	-	-	-
	Oil & Grease	mg/L					-	-	-	-
	pH	pH					-	-	-	-
	Total organic carbon	mg/L					-	-	-	-

Table 2 - Pollutant Limits Apply

EPL ID	Pollutant	Units of Measure	Monitoring Frequency	No. of Samples for the Month	Date(s) Sampled	Date(s) Obtained	Min Value	Max or Only Value	100%ile Limit	Exceedance (Yes/No)	Comments
11	TSS	mg/L	Special Frequency 1*	0	-	-	-	-	-	No	-
	Oil & Grease	mg/L					-	-	-	No	
	pH	pH					-	-	-	No	
12	TSS	mg/L	Special Frequency 1*	2	04/04/2023 18/04/2023	(Last Sample Obtained) 01/05/2023	11	28	50	No	-
	Oil & Grease	mg/L					<5	<5	10	No	
	pH	pH					8.13	8.2	6.5-8.5	No	

* Special Frequency 1 means the collection of samples as soon as practicable after each discharge commences and, in any case, not more than 12 hours after each discharge commences.

** Special Frequency 2 means collection of samples quarterly (in the event of flow during the quarter) at a time when there is flow and as soon as practicable after each wet weather discharge from points 11 and 12 commences and in any case not more than 12 hours after each discharge commences.



Rocglen Coal Mine- Monthly Monitoring Summary

Table 3 – Monitoring (Quarterly & Yearly – No Limits apply)

EPL ID	Pollutant	Units of Measure	Monitoring Frequency	No. of Samples for the Month	Date Sampled	Date Obtained	Min Value	Mean Value	Median Value	Max Value/Only Value
16	Aluminium	mg/L	Yearly	0	-	-	-	-	-	-
	Arsenic	mg/L					-	-	-	-
	Bicarbonate	mg/L					-	-	-	-
	Chloride	mg/L					-	-	-	-
	Iron	mg/L					-	-	-	-
	Manganese	mg/L					-	-	-	-
	Sodium	mg/L					-	-	-	-
16	Conductivity	µS/cm	Quarterly	0	-	-	-	-	-	-
	Oil & Grease	mg/L					-	-	-	-
	pH	pH					-	-	-	-
	TOC	mg/L					-	-	-	-
	TSS	mg/L					-	-	-	-



WHITEHAVEN COAL

Rocglen Coal Mine- Monthly Monitoring Summary

Figure 1 – EPL 12870 Monitoring Locations



Rocglen Coal Mine- Monthly Monitoring Summary

Site Information

EPL No: 12870

EPA Website Link: <http://epa.nsw.gov.au/prpoeoapp/ViewPOEOLicence.aspx?DOCID=40278&SYSUID=1&LICID=12870>

Licensee: Whitehaven Coal Mining Pty Ltd

Licensee Address: Rocglen Coal Mine, Wean Road, GUNNEDAH NSW 2380

EPL Monitoring Points: See Figure 1 below

Sampling Period: May 2023

Obtained Date: 13th June 2023

Publication Date: 19th June 2023

Table 1 - No Pollutant Limits Apply

EPL ID	Pollutant	Units of Measure	Monitoring Frequency	No. of Samples for the Month	Date(s) Sampled	Date(s) Obtained	Min Value	Mean Value	Median Value	Max or Only Value
4	Particulates-Deposited Matter (BD4)	g/m ² /month	Continuous	1	15/05/2023	26/05/2023	-	-	-	0.22
6	Particulates-Deposited Matter (BD6)	g/m ² /month	Continuous	1	15/05/2023	26/05/2023	-	-	-	1.01
10	PM ₁₀	µg/m ³	Every 6 days	5	05/05/2023 11/05/2023 17/05/2023 23/05/2023 29/05/2023	(Last Sample Obtained) 13/06/2023	6.5	7.3	7.2	8.3
11	Conductivity	µS /cm	Special Frequency 1*	0	-	-	-	-	-	-
	Total organic carbon	mg/L					-	-	-	-
12	Conductivity	µS /cm	Special Frequency 1*	0	-	-	-	-	-	-
	Total organic carbon	mg/L					-	-	-	-
13	TSS	mg/L	Special Frequency 2**(DDCK)	0	-	-	-	-	-	-
	Conductivity	µS/cm					-	-	-	-
	Oil & Grease	mg/L					-	-	-	-
	pH	pH					-	-	-	-



Rocglen Coal Mine- Monthly Monitoring Summary

EPL ID	Pollutant	Units of Measure	Monitoring Frequency	No. of Samples for the Month	Date(s) Sampled	Date(s) Obtained	Min Value	Mean Value	Median Value	Max or Only Value
	Total organic carbon	mg/L					-	-	-	-
14	TSS	mg/L	Special Frequency 2**(UNDC)	0	-	-	-	-	-	-
	Conductivity	µS/cm					-	-	-	-
	Oil & Grease	mg/L					-	-	-	-
	pH	pH					-	-	-	-
	Total organic carbon	mg/L					-	-	-	-
15	TSS	mg/L	Special Frequency 2** (SD7)	1	25/05/2023	01/06/2023	-	-	-	34
	Conductivity	µS /cm					-	-	-	220
	Oil & Grease	mg/L					-	-	-	<5
	pH	pH					-	-	-	8.2
	Total organic carbon	mg/L					-	-	-	12

Table 2 - Pollutant Limits Apply

EPL ID	Pollutant	Units of Measure	Monitoring Frequency	No. of Samples for the Month	Date(s) Sampled	Date(s) Obtained	Min Value	Max or Only Value	100%ile Limit	Exceedance (Yes/No)	Comments
11	TSS	mg/L	Special Frequency 1*	0	-	-	-	-	-	No	-
	Oil & Grease	mg/L					-	-	-	No	
	pH	pH					-	-	-	No	
12	TSS	mg/L	Special Frequency 1*	0	-	-	-	-	-	No	-
	Oil & Grease	mg/L					-	-	-	No	
	pH	pH					-	-	-	No	

* Special Frequency 1 means the collection of samples as soon as practicable after each discharge commences and, in any case, not more than 12 hours after each discharge commences.

** Special Frequency 2 means collection of samples quarterly (in the event of flow during the quarter) at a time when there is flow and as soon as practicable after each wet weather discharge from points 11 and 12 commences and in any case not more than 12 hours after each discharge commences.



Rocglen Coal Mine- Monthly Monitoring Summary

Table 3 – Monitoring (Quarterly & Yearly – No Limits apply)

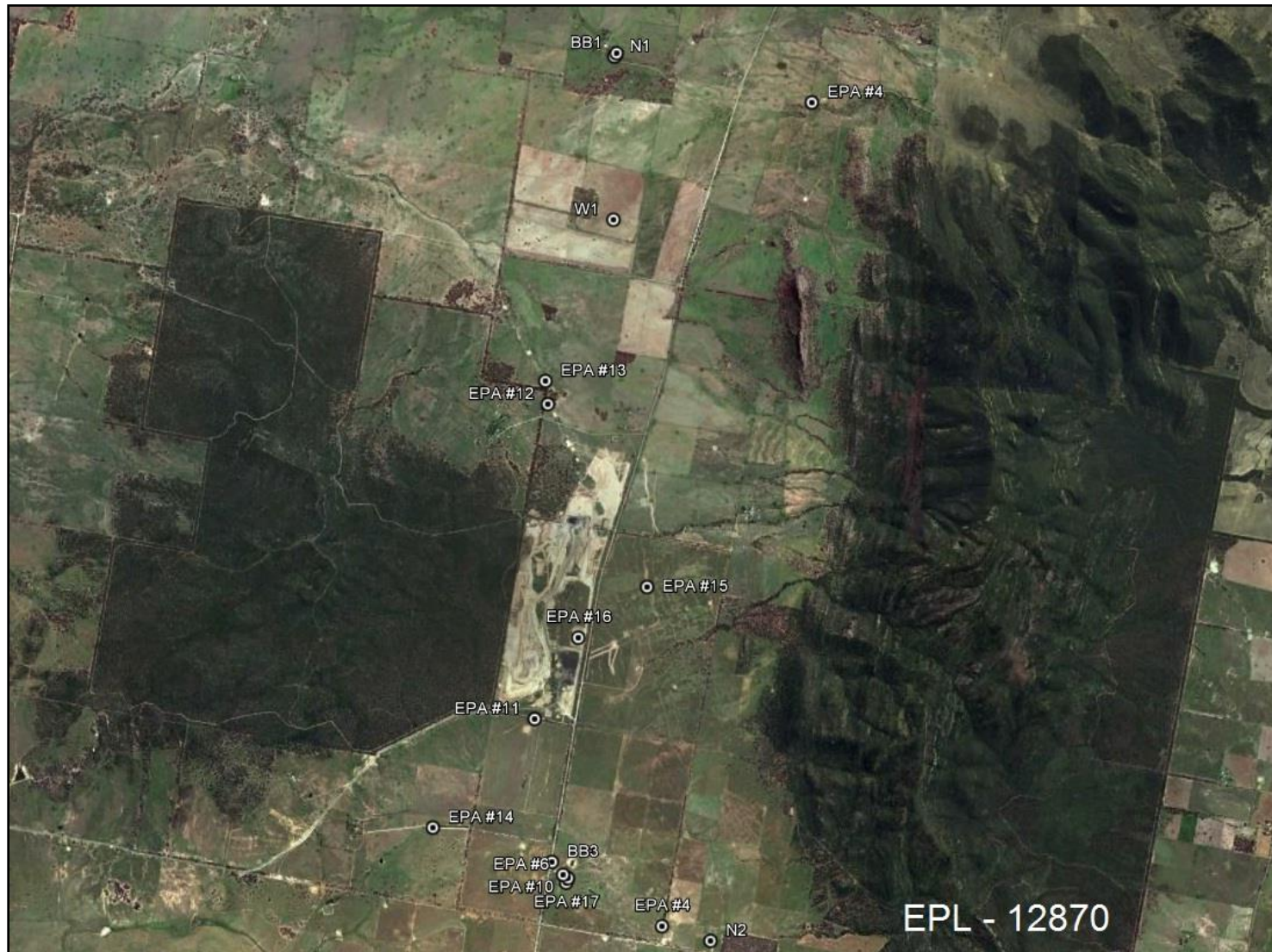
EPL ID	Pollutant	Units of Measure	Monitoring Frequency	No. of Samples for the Month	Date Sampled	Date Obtained	Min Value	Mean Value	Median Value	Max Value/Only Value
16	Aluminium	mg/L	Yearly	1	25/05/2023	01/06/2023	-	-	-	6.08
	Arsenic	mg/L					-	-	-	0.007
	Bicarbonate	mg/L					-	-	-	216
	Chloride	mg/L					-	-	-	34
	Iron	mg/L					-	-	-	3.9
	Manganese	mg/L					-	-	-	0.176
	Sodium	mg/L					-	-	-	117
16	Conductivity	µS/cm	Quarterly	1	25/05/2023	01/06/2023	-	-	-	610
	Oil & Grease	mg/L					-	-	-	<5
	pH	pH					-	-	-	8
	TOC	mg/L					-	-	-	6
	TSS	mg/L					-	-	-	31



WHITEHAVEN COAL

Rocglen Coal Mine- Monthly Monitoring Summary

Figure 1 – EPL 12870 Monitoring Locations



Rocglen Coal Mine- Monthly Monitoring Summary

Site Information

EPL No: 12870

EPA Website Link: <http://epa.nsw.gov.au/prpoeoapp/ViewPOEOLicence.aspx?DOCID=40278&SYSUID=1&LICID=12870>

Licensee: Whitehaven Coal Mining Pty Ltd

Licensee Address: Rocglen Coal Mine, Wean Road, GUNNEDAH NSW 2380

EPL Monitoring Points: See Figure 1 below

Sampling Period: June 2023

Obtained Date: 13th July 2023

Publication Date: 17th July 2023

Table 1 - No Pollutant Limits Apply

EPL ID	Pollutant	Units of Measure	Monitoring Frequency	No. of Samples for the Month	Date(s) Sampled	Date(s) Obtained	Min Value	Mean Value	Median Value	Max or Only Value
4	Particulates-Deposited Matter (BD4)	g/m ² /month	Continuous	1	14/06/2023	30/06/2023	-	-	-	0.49
6	Particulates-Deposited Matter (BD6)	g/m ² /month	Continuous	1	14/06/2023	30/06/2023	-	-	-	2.06
10	PM ₁₀	µg/m ³	Every 6 days	5	04/06/2023 10/06/2023 16/06/2023 22/06/2023 28/06/2023	(Last Sample Obtained) 13/07/2023	1.7	4	2.1	7.5
11	Conductivity	µS /cm	Special Frequency 1*	0	-	-	-	-	-	-
	Total organic carbon	mg/L					-	-	-	-
12	Conductivity	µS /cm	Special Frequency 1*	0	-	-	-	-	-	-
	Total organic carbon	mg/L					-	-	-	-
13	TSS	mg/L	Special Frequency 2**(DDCK)	0	-	-	-	-	-	-
	Conductivity	µS/cm					-	-	-	-
	Oil & Grease	mg/L					-	-	-	-
	pH	pH					-	-	-	-



Rocglen Coal Mine- Monthly Monitoring Summary

EPL ID	Pollutant	Units of Measure	Monitoring Frequency	No. of Samples for the Month	Date(s) Sampled	Date(s) Obtained	Min Value	Mean Value	Median Value	Max or Only Value
	Total organic carbon	mg/L					-	-	-	-
14	TSS	mg/L	Special Frequency 2**(UNDC)	0	-	-	-	-	-	-
	Conductivity	µS/cm					-	-	-	-
	Oil & Grease	mg/L					-	-	-	-
	pH	pH					-	-	-	-
	Total organic carbon	mg/L					-	-	-	-
15	TSS	mg/L	Special Frequency 2** (SD7)	0	-	-	-	-	-	-
	Conductivity	µS /cm					-	-	-	-
	Oil & Grease	mg/L					-	-	-	-
	pH	pH					-	-	-	-
	Total organic carbon	mg/L					-	-	-	-

Table 2 - Pollutant Limits Apply

EPL ID	Pollutant	Units of Measure	Monitoring Frequency	No. of Samples for the Month	Date(s) Sampled	Date(s) Obtained	Min Value	Max or Only Value	100%ile Limit	Exceedance (Yes/No)	Comments
11	TSS	mg/L	Special Frequency 1*	0	-	-	-	-	-	No	-
	Oil & Grease	mg/L					-	-	-	No	
	pH	pH					-	-	-	No	
12	TSS	mg/L	Special Frequency 1*	0	-	-	-	-	-	No	-
	Oil & Grease	mg/L					-	-	-	No	
	pH	pH					-	-	-	No	

* Special Frequency 1 means the collection of samples as soon as practicable after each discharge commences and, in any case, not more than 12 hours after each discharge commences.

** Special Frequency 2 means collection of samples quarterly (in the event of flow during the quarter) at a time when there is flow and as soon as practicable after each wet weather discharge from points 11 and 12 commences and in any case not more than 12 hours after each discharge commences.



Rocglen Coal Mine- Monthly Monitoring Summary

Table 3 – Monitoring (Quarterly & Yearly – No Limits apply)

EPL ID	Pollutant	Units of Measure	Monitoring Frequency	No. of Samples for the Month	Date Sampled	Date Obtained	Min Value	Mean Value	Median Value	Max Value/Only Value
16	Aluminium	mg/L	Yearly	0	-	-	-	-	-	-
	Arsenic	mg/L					-	-	-	-
	Bicarbonate	mg/L					-	-	-	-
	Chloride	mg/L					-	-	-	-
	Iron	mg/L					-	-	-	-
	Manganese	mg/L					-	-	-	-
	Sodium	mg/L					-	-	-	-
16	Conductivity	µS/cm	Quarterly	0	-	-	-	-	-	-
	Oil & Grease	mg/L					-	-	-	-
	pH	pH					-	-	-	-
	TOC	mg/L					-	-	-	-
	TSS	mg/L					-	-	-	-



WHITEHAVEN COAL

Rocglen Coal Mine- Monthly Monitoring Summary

Figure 1 – EPL 12870 Monitoring Locations



Rocglen Coal Mine- Monthly Monitoring Summary

Site Information

EPL No: 12870

EPA Website Link: <http://epa.nsw.gov.au/prpoeoapp/ViewPOEOLicence.aspx?DOCID=40278&SYSUID=1&LICID=12870>

Licensee: Whitehaven Coal Mining Pty Ltd

Licensee Address: Rocglen Coal Mine, Wean Road, GUNNEDAH NSW 2380

EPL Monitoring Points: See Figure 1 below

Sampling Period: July 2023

Obtained Date: 15th August 2023

Publication Date: 15th August 2023

Table 1 - No Pollutant Limits Apply

EPL ID	Pollutant	Units of Measure	Monitoring Frequency	No. of Samples for the Month	Date(s) Sampled	Date(s) Obtained	Min Value	Mean Value	Median Value	Max or Only Value
4	Particulates-Deposited Matter (BD4)	g/m ² /month	Continuous	1	13/07/2023	25/07/2023	-	-	-	0.74
6	Particulates-Deposited Matter (BD6)	g/m ² /month	Continuous	1	13/07/2023	25/07/2023	-	-	-	1.12
10	PM ₁₀	µg/m ³	Every 6 days	5	04/07/2023 10/07/2023 16/07/2023 22/07/2023 28/07/2023	(Last Sample Obtained) 15/08/2023	0.4	2.7	3.4	4.6
11	Conductivity	µS /cm	Special Frequency 1*	0	-	-	-	-	-	-
	Total organic carbon	mg/L					-	-	-	-
12	Conductivity	µS /cm	Special Frequency 1*	0	-	-	-	-	-	-
	Total organic carbon	mg/L					-	-	-	-
13	TSS	mg/L	Special Frequency 2**(DDCK)	0	-	-	-	-	-	-
	Conductivity	µS/cm					-	-	-	-
	Oil & Grease	mg/L					-	-	-	-
	pH	pH					-	-	-	-



Rocglen Coal Mine- Monthly Monitoring Summary

EPL ID	Pollutant	Units of Measure	Monitoring Frequency	No. of Samples for the Month	Date(s) Sampled	Date(s) Obtained	Min Value	Mean Value	Median Value	Max or Only Value
	Total organic carbon	mg/L					-	-	-	-
14	TSS	mg/L	Special Frequency 2**(UNDC)	0	-	-	-	-	-	-
	Conductivity	µS/cm					-	-	-	-
	Oil & Grease	mg/L					-	-	-	-
	pH	pH					-	-	-	-
	Total organic carbon	mg/L					-	-	-	-
15	TSS	mg/L	Special Frequency 2** (SD7)	0	-	-	-	-	-	-
	Conductivity	µS /cm					-	-	-	-
	Oil & Grease	mg/L					-	-	-	-
	pH	pH					-	-	-	-
	Total organic carbon	mg/L					-	-	-	-

Table 2 - Pollutant Limits Apply

EPL ID	Pollutant	Units of Measure	Monitoring Frequency	No. of Samples for the Month	Date(s) Sampled	Date(s) Obtained	Min Value	Max or Only Value	100%ile Limit	Exceedance (Yes/No)	Comments
11	TSS	mg/L	Special Frequency 1*	0	-	-	-	-	-	No	-
	Oil & Grease	mg/L					-	-	-	No	
	pH	pH					-	-	-	No	
12	TSS	mg/L	Special Frequency 1*	0	-	-	-	-	-	No	-
	Oil & Grease	mg/L					-	-	-	No	
	pH	pH					-	-	-	No	

* Special Frequency 1 means the collection of samples as soon as practicable after each discharge commences and, in any case, not more than 12 hours after each discharge commences.

** Special Frequency 2 means collection of samples quarterly (in the event of flow during the quarter) at a time when there is flow and as soon as practicable after each wet weather discharge from points 11 and 12 commences and in any case not more than 12 hours after each discharge commences.



Rocglen Coal Mine- Monthly Monitoring Summary

Table 3 – Monitoring (Quarterly & Yearly – No Limits apply)

EPL ID	Pollutant	Units of Measure	Monitoring Frequency	No. of Samples for the Month	Date Sampled	Date Obtained	Min Value	Mean Value	Median Value	Max Value/Only Value
16	Aluminium	mg/L	Yearly	0	-	-	-	-	-	-
	Arsenic	mg/L					-	-	-	-
	Bicarbonate	mg/L					-	-	-	-
	Chloride	mg/L					-	-	-	-
	Iron	mg/L					-	-	-	-
	Manganese	mg/L					-	-	-	-
	Sodium	mg/L					-	-	-	-
16	Conductivity	µS/cm	Quarterly	0	-	-	-	-	-	-
	Oil & Grease	mg/L					-	-	-	-
	pH	pH					-	-	-	-
	TOC	mg/L					-	-	-	-
	TSS	mg/L					-	-	-	-



WHITEHAVEN COAL

Rocglen Coal Mine- Monthly Monitoring Summary

Figure 1 – EPL 12870 Monitoring Locations



Rocglen Coal Mine- Monthly Monitoring Summary

Site Information

EPL No: 12870

EPA Website Link: <http://epa.nsw.gov.au/prpoeoapp/ViewPOEOLicence.aspx?DOCID=40278&SYSUID=1&LICID=12870>

Licensee: Whitehaven Coal Mining Pty Ltd

Licensee Address: Rocglen Coal Mine, Wean Road, GUNNEDAH NSW 2380

EPL Monitoring Points: See Figure 1 below

Sampling Period: August 2023

Obtained Date: 15th September 2023

Publication Date: 18th September 2023

Table 1 - No Pollutant Limits Apply

EPL ID	Pollutant	Units of Measure	Monitoring Frequency	No. of Samples for the Month	Date(s) Sampled	Date(s) Obtained	Min Value	Mean Value	Median Value	Max or Only Value
4	Particulates-Deposited Matter (BD4)	g/m ² /month	Continuous	1	14/08/2023	29/08/2023	-	-	-	1.19
6	Particulates-Deposited Matter (BD6)	g/m ² /month	Continuous	1	14/08/2023	29/08/2023	-	-	-	1.44
10	PM ₁₀	µg/m ³	Every 6 days	5	03/08/2023 09/08/2023 15/08/2023 21/08/2023 27/08/2023	(Last Sample Obtained) 08/09/2023	5.0	6.22	5.6	8.6
11	Conductivity	µS /cm	Special Frequency 1*	0	-	-	-	-	-	-
	Total organic carbon	mg/L					-	-	-	-
12	Conductivity	µS /cm	Special Frequency 1*	0	-	-	-	-	-	-
	Total organic carbon	mg/L					-	-	-	-
13	TSS	mg/L	Special Frequency 2**(DDCK)	0	-	-	-	-	-	-
	Conductivity	µS/cm					-	-	-	-
	Oil & Grease	mg/L					-	-	-	-
	pH	pH					-	-	-	-



Rocglen Coal Mine- Monthly Monitoring Summary

EPL ID	Pollutant	Units of Measure	Monitoring Frequency	No. of Samples for the Month	Date(s) Sampled	Date(s) Obtained	Min Value	Mean Value	Median Value	Max or Only Value
	Total organic carbon	mg/L					-	-	-	-
14	TSS	mg/L	Special Frequency 2**(UNDC)	0	-	-	-	-	-	-
	Conductivity	µS/cm					-	-	-	-
	Oil & Grease	mg/L					-	-	-	-
	pH	pH					-	-	-	-
	Total organic carbon	mg/L					-	-	-	-
15	TSS	mg/L	Special Frequency 2** (SD7)	0	-	-	-	-	-	-
	Conductivity	µS /cm					-	-	-	-
	Oil & Grease	mg/L					-	-	-	-
	pH	pH					-	-	-	-
	Total organic carbon	mg/L					-	-	-	-

Table 2 - Pollutant Limits Apply

EPL ID	Pollutant	Units of Measure	Monitoring Frequency	No. of Samples for the Month	Date(s) Sampled	Date(s) Obtained	Min Value	Max or Only Value	100%ile Limit	Exceedance (Yes/No)	Comments
11	TSS	mg/L	Special Frequency 1*	0	-	-	-	-	-	No	-
	Oil & Grease	mg/L					-	-	-	No	
	pH	pH					-	-	-	No	
12	TSS	mg/L	Special Frequency 1*	0	-	-	-	-	-	No	-
	Oil & Grease	mg/L					-	-	-	No	
	pH	pH					-	-	-	No	

* Special Frequency 1 means the collection of samples as soon as practicable after each discharge commences and, in any case, not more than 12 hours after each discharge commences.

** Special Frequency 2 means collection of samples quarterly (in the event of flow during the quarter) at a time when there is flow and as soon as practicable after each wet weather discharge from points 11 and 12 commences and in any case not more than 12 hours after each discharge commences.

Rocglen Coal Mine- Monthly Monitoring Summary

Table 3 – Monitoring (Quarterly & Yearly – No Limits apply)

EPL ID	Pollutant	Units of Measure	Monitoring Frequency	No. of Samples for the Month	Date Sampled	Date Obtained	Min Value	Mean Value	Median Value	Max Value/Only Value
16	Aluminium	mg/L	Yearly	0	-	-	-	-	-	-
	Arsenic	mg/L					-	-	-	-
	Bicarbonate	mg/L					-	-	-	-
	Chloride	mg/L					-	-	-	-
	Iron	mg/L					-	-	-	-
	Manganese	mg/L					-	-	-	-
	Sodium	mg/L					-	-	-	-
16	Conductivity	µS/cm	Quarterly	1	09/08/2023	16/08/2023	-	-	-	680
	Oil & Grease	mg/L					-	-	-	<5
	pH	pH					-	-	-	8.4
	TOC	mg/L					-	-	-	4
	TSS	mg/L					-	-	-	58



WHITEHAVEN COAL

Rocglen Coal Mine- Monthly Monitoring Summary

Figure 1 – EPL 12870 Monitoring Locations





Rocglen Coal Mine- Monthly Monitoring Summary

Site Information

EPL No: 12870

EPA Website Link: <http://epa.nsw.gov.au/prpoeoapp/ViewPOEOLicence.aspx?DOCID=40278&SYSUID=1&LICID=12870>

Licensee: Whitehaven Coal Mining Pty Ltd

Licensee Address: Rocglen Coal Mine, Wean Road, GUNNEDAH NSW 2380

EPL Monitoring Points: See Figure 1 below

Sampling Period: September 2023

Obtained Date: 12th October 2023

Publication Date: 13th October 2023

Table 1 - No Pollutant Limits Apply

EPL ID	Pollutant	Units of Measure	Monitoring Frequency	No. of Samples for the Month	Date(s) Sampled	Date(s) Obtained	Min Value	Mean Value	Median Value	Max or Only Value
4	Particulates-Deposited Matter (BD4)	g/m ² /month	Continuous	1	12/09/2023	05/10/2023	-	-	-	0.59
6	Particulates-Deposited Matter (BD6)	g/m ² /month	Continuous	1	12/09/2023	05/10/2023	-	-	-	1.84
10	PM ₁₀	µg/m ³	Every 6 days	5	02/09/2023 08/09/2023 14/09/2023 20/09/2023 26/09/2023	(Last Sample Obtained) 12/10/2023	3.2	7.0	7.4	10.2
11	Conductivity	µS /cm	Special Frequency 1*	0	-	-	-	-	-	-
	Total organic carbon	mg/L					-	-	-	-
12	Conductivity	µS /cm	Special Frequency 1*	0	-	-	-	-	-	-
	Total organic carbon	mg/L					-	-	-	-
13	TSS	mg/L	Special Frequency 2**(DDCK)	0	-	-	-	-	-	-
	Conductivity	µS/cm					-	-	-	-
	Oil & Grease	mg/L					-	-	-	-
	pH	pH					-	-	-	-



Rocglen Coal Mine- Monthly Monitoring Summary

EPL ID	Pollutant	Units of Measure	Monitoring Frequency	No. of Samples for the Month	Date(s) Sampled	Date(s) Obtained	Min Value	Mean Value	Median Value	Max or Only Value
	Total organic carbon	mg/L					-	-	-	-
14	TSS	mg/L	Special Frequency 2**(UNDC)	0	-	-	-	-	-	-
	Conductivity	µS/cm					-	-	-	-
	Oil & Grease	mg/L					-	-	-	-
	pH	pH					-	-	-	-
	Total organic carbon	mg/L					-	-	-	-
15	TSS	mg/L	Special Frequency 2** (SD7)	0	-	-	-	-	-	-
	Conductivity	µS /cm					-	-	-	-
	Oil & Grease	mg/L					-	-	-	-
	pH	pH					-	-	-	-
	Total organic carbon	mg/L					-	-	-	-

Table 2 - Pollutant Limits Apply

EPL ID	Pollutant	Units of Measure	Monitoring Frequency	No. of Samples for the Month	Date(s) Sampled	Date(s) Obtained	Min Value	Max or Only Value	100%ile Limit	Exceedance (Yes/No)	Comments
11	TSS	mg/L	Special Frequency 1*	0	-	-	-	-	-	No	-
	Oil & Grease	mg/L					-	-	-	No	
	pH	pH					-	-	-	No	
12	TSS	mg/L	Special Frequency 1*	0	-	-	-	-	-	No	-
	Oil & Grease	mg/L					-	-	-	No	
	pH	pH					-	-	-	No	

* Special Frequency 1 means the collection of samples as soon as practicable after each discharge commences and, in any case, not more than 12 hours after each discharge commences.

** Special Frequency 2 means collection of samples quarterly (in the event of flow during the quarter) at a time when there is flow and as soon as practicable after each wet weather discharge from points 11 and 12 commences and in any case not more than 12 hours after each discharge commences.



Rocglen Coal Mine- Monthly Monitoring Summary

Table 3 – Monitoring (Quarterly & Yearly – No Limits apply)

EPL ID	Pollutant	Units of Measure	Monitoring Frequency	No. of Samples for the Month	Date Sampled	Date Obtained	Min Value	Mean Value	Median Value	Max Value/Only Value
16	Aluminium	mg/L	Yearly	0	-	-	-	-	-	-
	Arsenic	mg/L					-	-	-	-
	Bicarbonate	mg/L					-	-	-	-
	Chloride	mg/L					-	-	-	-
	Iron	mg/L					-	-	-	-
	Manganese	mg/L					-	-	-	-
	Sodium	mg/L					-	-	-	-
16	Conductivity	µS/cm	Quarterly	0	-	-	-	-	-	-
	Oil & Grease	mg/L					-	-	-	-
	pH	pH					-	-	-	-
	TOC	mg/L					-	-	-	-
	TSS	mg/L					-	-	-	-



WHITEHAVEN COAL

Rocglen Coal Mine- Monthly Monitoring Summary

Figure 1 – EPL 12870 Monitoring Locations



Rocglen Coal Mine- Monthly Monitoring Summary

Site Information

EPL No: 12870

EPA Website Link: <http://epa.nsw.gov.au/prpoeoapp/ViewPOEOLicence.aspx?DOCID=40278&SYSUID=1&LICID=12870>

Licensee: Whitehaven Coal Mining Pty Ltd

Licensee Address: Rocglen Coal Mine, Wean Road, GUNNEDAH NSW 2380

EPL Monitoring Points: See Figure 1 below

Sampling Period: October 2023

Obtained Date: 7th November 2023

Publication Date: 13th November 2023

Table 1 - No Pollutant Limits Apply

EPL ID	Pollutant	Units of Measure	Monitoring Frequency	No. of Samples for the Month	Date(s) Sampled	Date(s) Obtained	Min Value	Mean Value	Median Value	Max or Only Value
4	Particulates-Deposited Matter (BD4)	g/m ² /month	Continuous	1	13/10/2023	31/10/2023	-	-	-	1.06
6	Particulates-Deposited Matter (BD6)	g/m ² /month	Continuous	1	13/10/2023	31/10/2023	-	-	-	0.85
10	PM ₁₀	µg/m ³	Every 6 days	5	02/10/2023 08/10/2023 14/10/2023 20/10/2023 26/10/2023	(Last Sample Obtained) 7/11/2023	6.4	24.88	20.8	61.0
11	Conductivity	µS /cm	Special Frequency 1*	0	-	-	-	-	-	-
	Total organic carbon	mg/L					-	-	-	-
12	Conductivity	µS /cm	Special Frequency 1*	0	-	-	-	-	-	-
	Total organic carbon	mg/L					-	-	-	-
13	TSS	mg/L	Special Frequency 2**(DDCK)	0	-	-	-	-	-	-
	Conductivity	µS/cm					-	-	-	-
	Oil & Grease	mg/L					-	-	-	-
	pH	pH					-	-	-	-



Rocglen Coal Mine- Monthly Monitoring Summary

EPL ID	Pollutant	Units of Measure	Monitoring Frequency	No. of Samples for the Month	Date(s) Sampled	Date(s) Obtained	Min Value	Mean Value	Median Value	Max or Only Value
	Total organic carbon	mg/L					-	-	-	-
14	TSS	mg/L	Special Frequency 2**(UNDC)	0	-	-	-	-	-	-
	Conductivity	µS/cm					-	-	-	-
	Oil & Grease	mg/L					-	-	-	-
	pH	pH					-	-	-	-
	Total organic carbon	mg/L					-	-	-	-
15	TSS	mg/L	Special Frequency 2** (SD7)	0	-	-	-	-	-	-
	Conductivity	µS /cm					-	-	-	-
	Oil & Grease	mg/L					-	-	-	-
	pH	pH					-	-	-	-
	Total organic carbon	mg/L					-	-	-	-

Table 2 - Pollutant Limits Apply

EPL ID	Pollutant	Units of Measure	Monitoring Frequency	No. of Samples for the Month	Date(s) Sampled	Date(s) Obtained	Min Value	Max or Only Value	100%ile Limit	Exceedance (Yes/No)	Comments
11	TSS	mg/L	Special Frequency 1*	0	-	-	-	-	-	No	-
	Oil & Grease	mg/L					-	-	-	No	
	pH	pH					-	-	-	No	
12	TSS	mg/L	Special Frequency 1*	0	-	-	-	-	-	No	-
	Oil & Grease	mg/L					-	-	-	No	
	pH	pH					-	-	-	No	

* Special Frequency 1 means the collection of samples as soon as practicable after each discharge commences and, in any case, not more than 12 hours after each discharge commences.

** Special Frequency 2 means collection of samples quarterly (in the event of flow during the quarter) at a time when there is flow and as soon as practicable after each wet weather discharge from points 11 and 12 commences and in any case not more than 12 hours after each discharge commences.



Rocglen Coal Mine- Monthly Monitoring Summary

Table 3 – Monitoring (Quarterly & Yearly – No Limits apply)

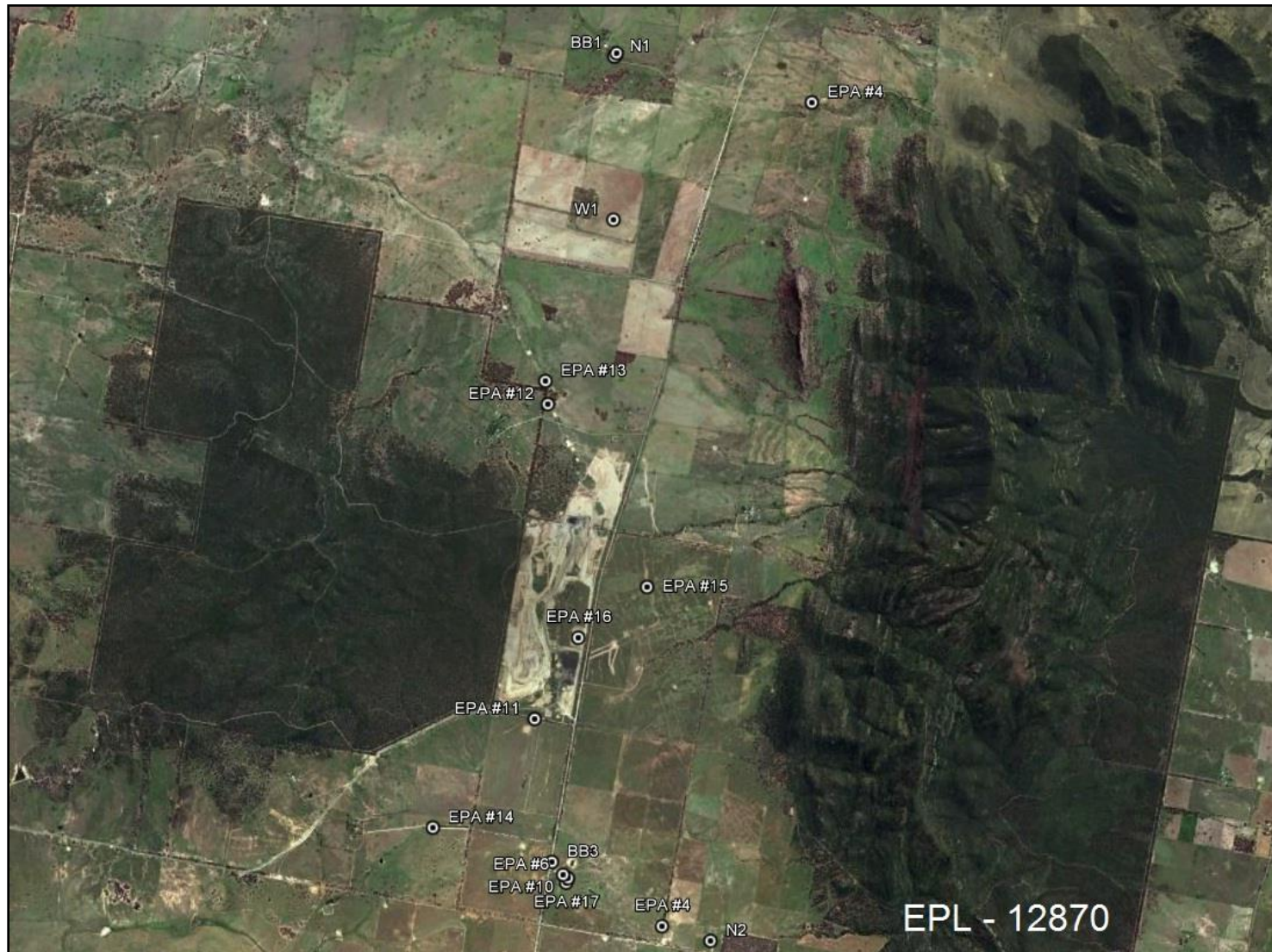
EPL ID	Pollutant	Units of Measure	Monitoring Frequency	No. of Samples for the Month	Date Sampled	Date Obtained	Min Value	Mean Value	Median Value	Max Value/Only Value
16	Aluminium	mg/L	Yearly	0	-	-	-	-	-	-
	Arsenic	mg/L					-	-	-	-
	Bicarbonate	mg/L					-	-	-	-
	Chloride	mg/L					-	-	-	-
	Iron	mg/L					-	-	-	-
	Manganese	mg/L					-	-	-	-
	Sodium	mg/L					-	-	-	-
16	Conductivity	µS/cm	Quarterly	0	-	-	-	-	-	-
	Oil & Grease	mg/L					-	-	-	-
	pH	pH					-	-	-	-
	TOC	mg/L					-	-	-	-
	TSS	mg/L					-	-	-	-



WHITEHAVEN COAL

Rocglen Coal Mine- Monthly Monitoring Summary

Figure 1 – EPL 12870 Monitoring Locations



Rocglen Coal Mine- Monthly Monitoring Summary

Site Information

EPL No: 12870

EPA Website Link: <http://epa.nsw.gov.au/prpoeoapp/ViewPOEOLicence.aspx?DOCID=40278&SYSUID=1&LICID=12870>

Licensee: Whitehaven Coal Mining Pty Ltd

Licensee Address: Rocglen Coal Mine, Wean Road, GUNNEDAH NSW 2380

EPL Monitoring Points: See Figure 1 below

Sampling Period: November 2023

Obtained Date: 11th December 2023

Publication Date: 18th December 2023

Table 1 - No Pollutant Limits Apply

EPL ID	Pollutant	Units of Measure	Monitoring Frequency	No. of Samples for the Month	Date(s) Sampled	Date(s) Obtained	Min Value	Mean Value	Median Value	Max or Only Value
4	Particulates-Deposited Matter (BD4)	g/m ² /month	Continuous	1	13/11/2023	31/11/2023	-	-	-	1.60
6	Particulates-Deposited Matter (BD6)	g/m ² /month	Continuous	1	13/11/2023	31/11/2023	-	-	-	1.10
10	PM ₁₀	µg/m ³	Every 6 days	5	01/11/2023 07/11/2023 13/11/2023 19/11/2023 25/11/2023	(Last Sample Obtained) 11/12/2023	1.5	12.5	10.7	28.3
11	Conductivity	µS /cm	Special Frequency 1*	1	28/11/2023	6/12/2023	-	-	-	613
	Total organic carbon	mg/L					-	-	-	16
12	Conductivity	µS /cm	Special Frequency 1*	0	-	-	-	-	-	-
	Total organic carbon	mg/L					-	-	-	-
13	TSS	mg/L	Special Frequency 2**(DDCK)	0	-	-	-	-	-	-
	Conductivity	µS/cm					-	-	-	-
	Oil & Grease	mg/L					-	-	-	-
	pH	pH					-	-	-	-



Rocglan Coal Mine- Monthly Monitoring Summary

EPL ID	Pollutant	Units of Measure	Monitoring Frequency	No. of Samples for the Month	Date(s) Sampled	Date(s) Obtained	Min Value	Mean Value	Median Value	Max or Only Value
	Total organic carbon	mg/L					-	-	-	-
14	TSS	mg/L	Special Frequency 2**(UNDC)	0	-	-	-	-	-	-
	Conductivity	µS/cm					-	-	-	-
	Oil & Grease	mg/L					-	-	-	-
	pH	pH					-	-	-	-
	Total organic carbon	mg/L					-	-	-	-
15	TSS	mg/L	Special Frequency 2** (SD7)	1	08/11/2023	16/11/2023	-	-	-	14
	Conductivity	µS /cm					-	-	-	235
	Oil & Grease	mg/L					-	-	-	<5
	pH	pH					-	-	-	8.70
	Total organic carbon	mg/L					-	-	-	17

Table 2 - Pollutant Limits Apply

EPL ID	Pollutant	Units of Measure	Monitoring Frequency	No. of Samples for the Month	Date(s) Sampled	Date(s) Obtained	Min Value	Max or Only Value	100%ile Limit	Exceedance (Yes/No)	Comments
11	TSS	mg/L	Special Frequency 1*	1	28/11/2023	6/12/2023	-	14	50	No	-
	Oil & Grease	mg/L					-	<5	10	No	
	pH	pH					-	7.83	8.5	No	
12	TSS	mg/L	Special Frequency 1*	0	-	-	-	-	-	No	-
	Oil & Grease	mg/L					-	-	-	No	
	pH	pH					-	-	-	No	

* Special Frequency 1 means the collection of samples as soon as practicable after each discharge commences and, in any case, not more than 12 hours after each discharge commences.

** Special Frequency 2 means collection of samples quarterly (in the event of flow during the quarter) at a time when there is flow and as soon as practicable after each wet weather discharge from points 11 and 12 commences and in any case not more than 12 hours after each discharge commences.

Rocglen Coal Mine- Monthly Monitoring Summary

Table 3 – Monitoring (Quarterly & Yearly – No Limits apply)

EPL ID	Pollutant	Units of Measure	Monitoring Frequency	No. of Samples for the Month	Date Sampled	Date Obtained	Min Value	Mean Value	Median Value	Max Value/Only Value
16	Aluminium	mg/L	Yearly	0	-	-	-	-	-	-
	Arsenic	mg/L					-	-	-	-
	Bicarbonate	mg/L					-	-	-	-
	Chloride	mg/L					-	-	-	-
	Iron	mg/L					-	-	-	-
	Manganese	mg/L					-	-	-	-
	Sodium	mg/L					-	-	-	-
16	Conductivity	µS/cm	Quarterly	1	08/11/2023	16/11/2023	-	-	-	960
	Oil & Grease	mg/L					-	-	-	<5
	pH	pH					-	-	-	9.00
	TOC	mg/L					-	-	-	11
	TSS	mg/L					-	-	-	28



WHITEHAVEN COAL

Rocglen Coal Mine- Monthly Monitoring Summary

Figure 1 – EPL 12870 Monitoring Locations



Rocglen Coal Mine- Monthly Monitoring Summary

Site Information

EPL No: 12870

EPA Website Link: <http://epa.nsw.gov.au/prpoeoapp/ViewPOEOLicence.aspx?DOCID=40278&SYSUID=1&LICID=12870>

Licensee: Whitehaven Coal Mining Pty Ltd

Licensee Address: Rocglen Coal Mine, Wean Road, GUNNEDAH NSW 2380

EPL Monitoring Points: See Figure 1 below

Sampling Period: December 2023

Obtained Date: 26th January 2024

Publication Date: 29th January 2024

Table 1 - No Pollutant Limits Apply

EPL ID	Pollutant	Units of Measure	Monitoring Frequency	No. of Samples for the Month	Date(s) Sampled	Date(s) Obtained	Min Value	Mean Value	Median Value	Max or Only Value
4	Particulates-Deposited Matter (BD4)	g/m ² /month	Continuous	1	13/12/2023	2/01/2024	-	-	-	1.14
6	Particulates-Deposited Matter (BD6)	g/m ² /month	Continuous	1	13/12/2023	2/01/2024	-	-	-	0.7
10	PM ₁₀	µg/m ³	Every 6 days	5	01/12/2023 07/12/2023 13/12/2023 19/12/2023 25/12/2023	(Last Sample Obtained) 26/01/2024	4.2	13.7	13.25	24.8
11	Conductivity	µS /cm	Special Frequency 1*	0	-	-	-	-	-	-
	Total organic carbon	mg/L					-	-	-	-
12	Conductivity	µS /cm	Special Frequency 1*	0	-	-	-	-	-	-
	Total organic carbon	mg/L					-	-	-	-
13	TSS	mg/L		0	-	-	-	-	-	-
	Conductivity	µS/cm					-	-	-	-



Rocglen Coal Mine- Monthly Monitoring Summary

EPL ID	Pollutant	Units of Measure	Monitoring Frequency	No. of Samples for the Month	Date(s) Sampled	Date(s) Obtained	Min Value	Mean Value	Median Value	Max or Only Value
	Oil & Grease	mg/L	Special Frequency 2**(DDCK)				-	-	-	-
	pH	pH					-	-	-	-
	Total organic carbon	mg/L					-	-	-	-
14	TSS	mg/L	Special Frequency 2**(UNDC)	0	-	-	-	-	-	-
	Conductivity	µS/cm					-	-	-	-
	Oil & Grease	mg/L					-	-	-	-
	pH	pH					-	-	-	-
	Total organic carbon	mg/L					-	-	-	-
15	TSS	mg/L	Special Frequency 2** (SD7)	0	-	-	-	-	-	-
	Conductivity	µS /cm					-	-	-	-
	Oil & Grease	mg/L					-	-	-	-
	pH	pH					-	-	-	-
	Total organic carbon	mg/L					-	-	-	-

Table 2 - Pollutant Limits Apply

EPL ID	Pollutant	Units of Measure	Monitoring Frequency	No. of Samples for the Month	Date(s) Sampled	Date(s) Obtained	Min Value	Max or Only Value	100%ile Limit	Exceedance (Yes/No)	Comments
11	TSS	mg/L	Special Frequency 1*	0	-	-	-	-	-	No	-
	Oil & Grease	mg/L					-	-	-	No	
	pH	pH					-	-	-	No	
12	TSS	mg/L	Special Frequency 1*	0	-	-	-	-	-	No	-
	Oil & Grease	mg/L					-	-	-	No	
	pH	pH					-	-	-	No	

* Special Frequency 1 means the collection of samples as soon as practicable after each discharge commences and, in any case, not more than 12 hours after each discharge commences.



Rocglen Coal Mine- Monthly Monitoring Summary

** Special Frequency 2 means collection of samples quarterly (in the event of flow during the quarter) at a time when there is flow and as soon as practicable after each wet weather discharge from points 11 and 12 commences and in any case not more than 12 hours after each discharge commences.

Table 3 – Monitoring (Quarterly & Yearly – No Limits apply)

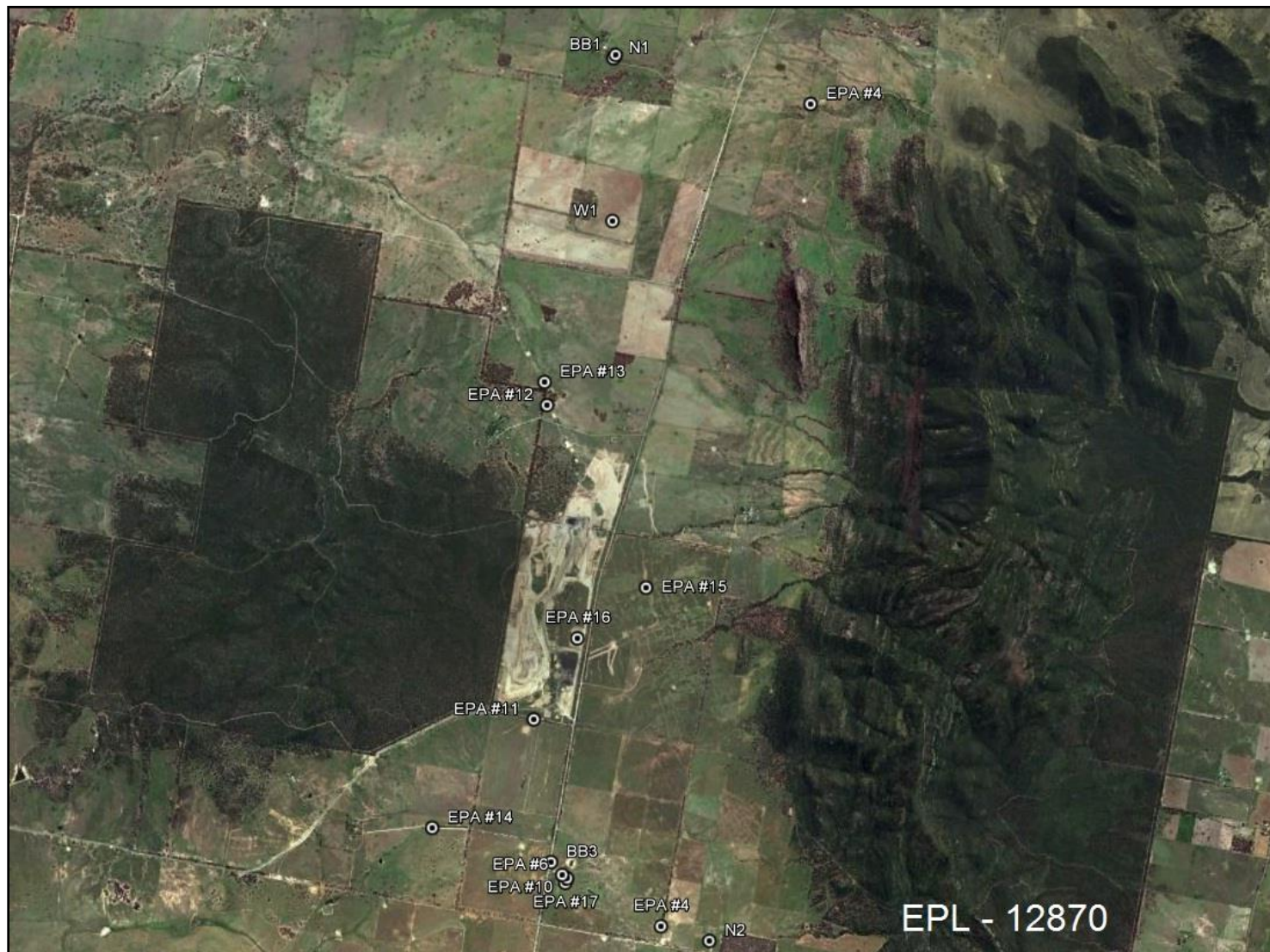
EPL ID	Pollutant	Units of Measure	Monitoring Frequency	No. of Samples for the Month	Date Sampled	Date Obtained	Min Value	Mean Value	Median Value	Max Value/Only Value
16	Aluminium	mg/L	Yearly	0	-	-	-	-	-	-
	Arsenic	mg/L					-	-	-	-
	Bicarbonate	mg/L					-	-	-	-
	Chloride	mg/L					-	-	-	-
	Iron	mg/L					-	-	-	-
	Manganese	mg/L					-	-	-	-
	Sodium	mg/L					-	-	-	-
16	Conductivity	µS/cm	Quarterly	0	-	-	-	-	-	-
	Oil & Grease	mg/L					-	-	-	-
	pH	pH					-	-	-	-
	TOC	mg/L					-	-	-	-
	TSS	mg/L					-	-	-	-



WHITEHAVEN COAL

Rocglen Coal Mine- Monthly Monitoring Summary

Figure 1 – EPL 12870 Monitoring Locations



Rocglan Coal Mine- Monthly Monitoring Summary

EPL MONTHLY MONITORING REPORTS 2023 CORRECTION LOG

Month of EPL Report	Date of Original Publishing	Date of Correction	Date of Republishing	Correction/s made
February 2023	17 th March 2023	20 th April 2023	20 th April 2023	<ul style="list-style-type: none"> Changed No. samples for the month (original data: 4, corrected data: 5) for EPL ID 10 Added date sampled for EPL ID 10 (28/02/2023) Changed Mean Value for EPL ID 10 (original data: 13.9, corrected data: 75.34) Changed Median Value for EPL ID 10 (original data: 11.55, corrected data: 13.9) Changed Max or Only Value for EPL ID 10 (original data: 23.6, corrected data: 321)
December 2023	29 th January 2024	19 th May 2025	19 th May 2025	<ul style="list-style-type: none"> Changed No. samples for the month (original data: 6, corrected data: 5) for EPL ID 10 Added data value for EPL ID 6